

Our Nuclear Engineering offer



fortil Committed to
Sustainable
Performance



Our model	4
Key figures	5
Geographical locations	5
Our expertise in nuclear engineering	6
Locations	6
Our business experts	8
A player in fuel cycle recovery	9
Our business solutions	10
Mechanical engineering	10
General installation engineering	12
Construction and project management of nuclear facilities	14
Nuclear safety	16
Some of our partners	18
Quality policy, certifications and accreditations	20
Our delivery models	21
Technical support	
Technical expertise hub	
Service hub	
Work package	
Our HR vision	23
Our sociogram	24
Entrepreneurial engineers	25
A socially responsible group	26
Fortil Endowment Fund	27



Profitable performance and independent growth.

Ever since our inception, we have never needed any third-party loans or investment in order to grow. Our development has been solely based on our own funds. It is the commitment of our employees, their inclusion in the model, our level of excellence and success in our achievements that will help us maintain this independence.

Expert employees dedicated to engineering and innovation.

Our experts will support you at every stage of your project. From R&D to design, project supervision and implementation, right through to the operational phase.

A transparent and efficient organisation.

We have opted for a simple tree structure in our roles, aimed at development and performance. Our interpersonal pact, friendly competition between roles and the sharing of responsibilities are naturally opposed to bureaucracy and the stagnation of flows.

A responsible vision.

The challenges facing our employees lie at the heart of our model, in which the inclusion, development and independence of each individual is the cement that holds it together.

Our mission is to secure the long-term future and positive development of their ecosystem through our HR and CSR policies.

Founded in 2009, the Fortil model was devised by entrepreneurial engineers.

We support our customers in their engineering and digital transformation projects, through a set of solutions which has been designed to meet the key challenges of their growth.

We base our development on a model that combines strong expansion and independence. Over the last 15 years, our services and geographic presence have evolved, bringing us as close as possible to our customers and increasing our level of expertise. At the same time, we have been careful to retain the essence of the Fortil project. Although we currently find ourselves in a significant phase of expansion, the high standards of our projects and recruitments remain as demanding as ever. Quality will always take precedence over quantity, as we prefer excellence to ease.

Our ambition is to become the largest independent engineering group in Europe, working to serve future generations.

To achieve this, we work every day to succeed in our 4 core foundations.

Fortil Group today



2550
employees



838
clients



14
countries



30
branches



224
€M in
turnover



22
% normalised
EBITDA

Our geographical locations



Our expertise in nuclear engineering

Our development choices and our desire to always be as close as possible to our partners are reflected in our strong local presence, ensuring proximity and prompt operational response.

Locations



Fortil is a member of:



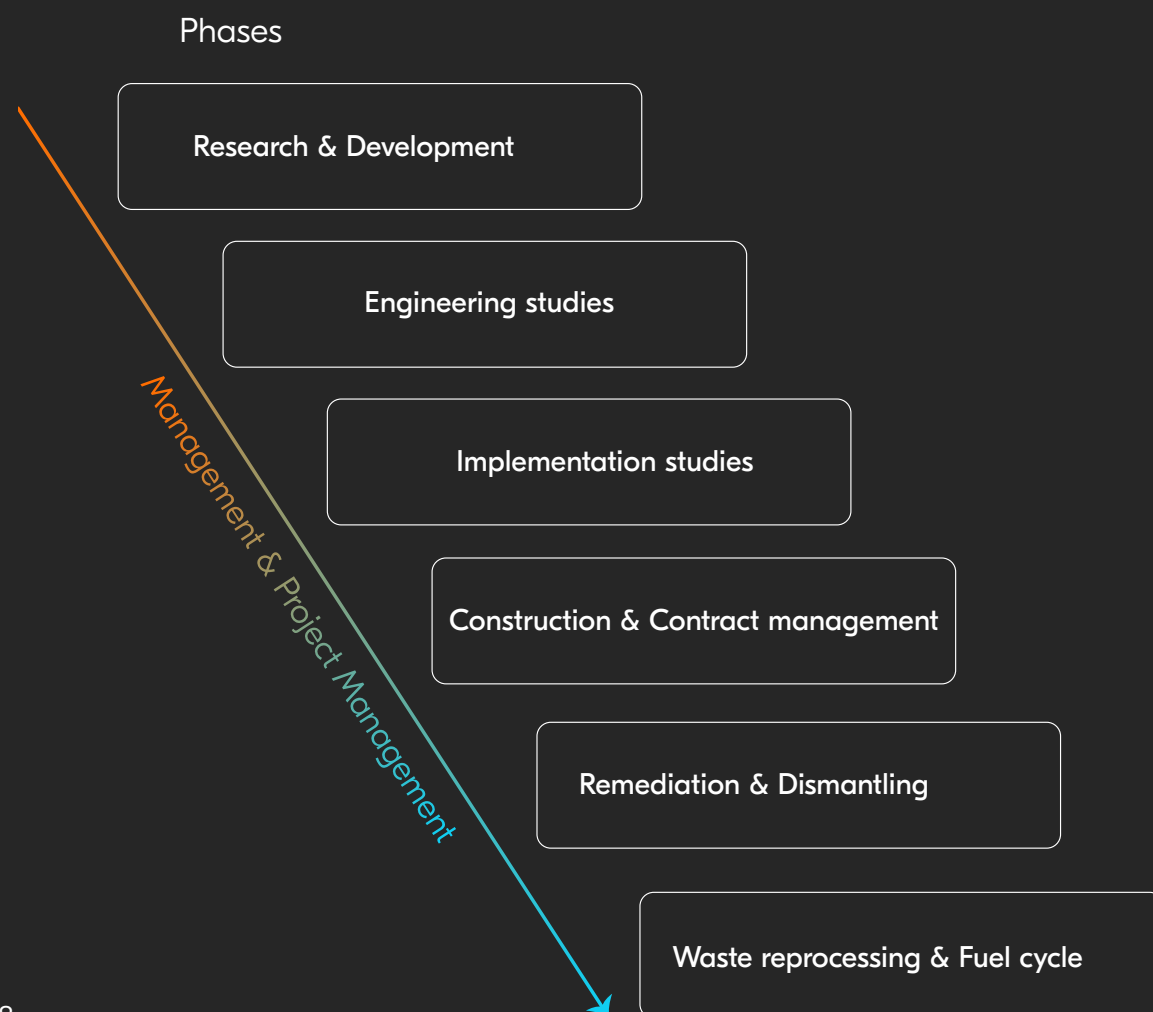
Our business experts

At every stage of your project, our teams are able to respond to the specific challenges of the nuclear sector.

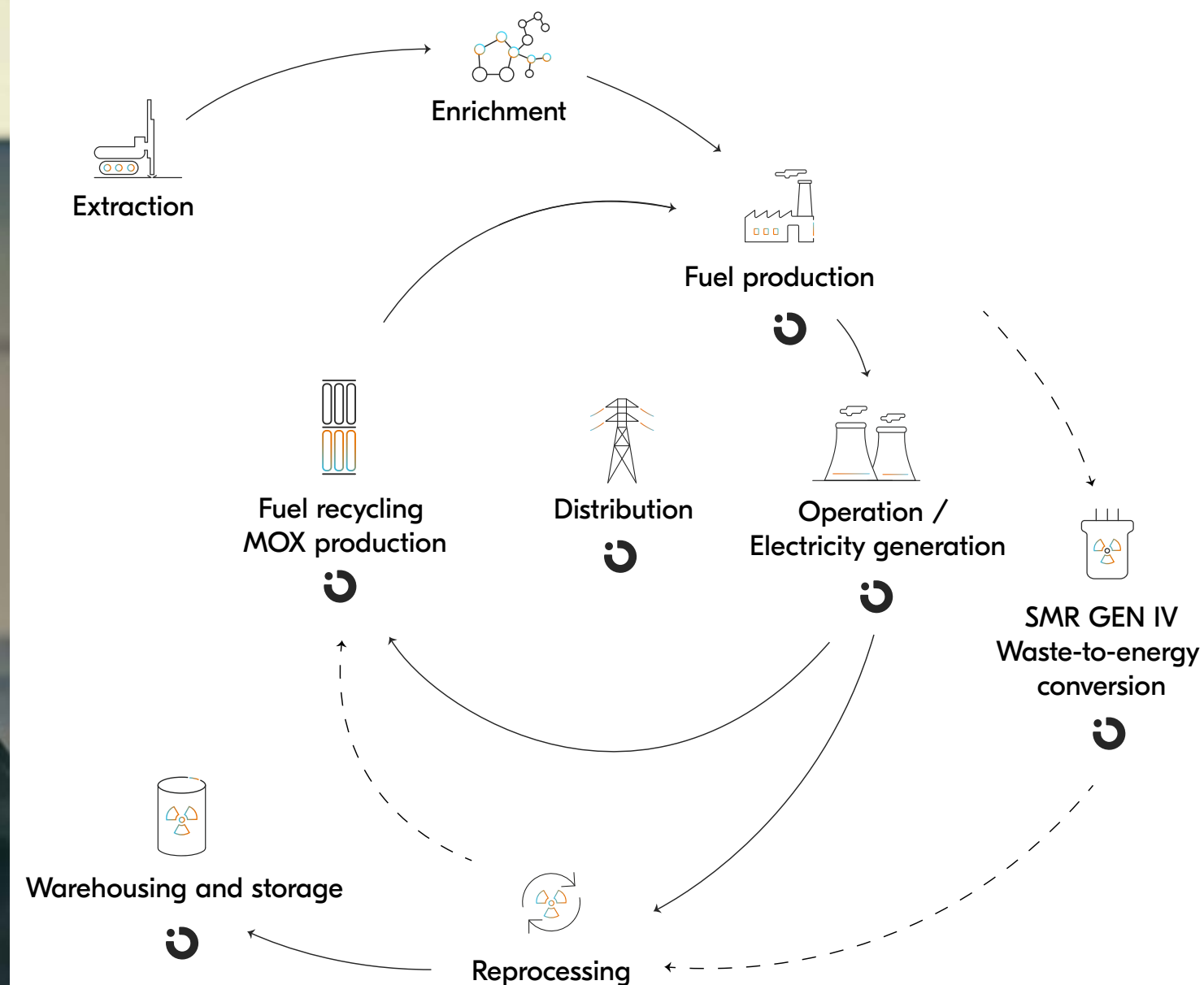
Our work includes all stages of development, manufacturing and installation monitoring, work site supervision, and project quality and safety. We cover the full spectrum of engineering, construction and project management.

Our nuclear engineering experts add value through:

- project management methods that include handling technical, organisational or human requirements.
- tools and processes for controlling and mitigating risks related to projects, QHSE, radiation protection and nuclear safety, as well as organisational risks.



A player in fuel cycle and nuclear waste recovery

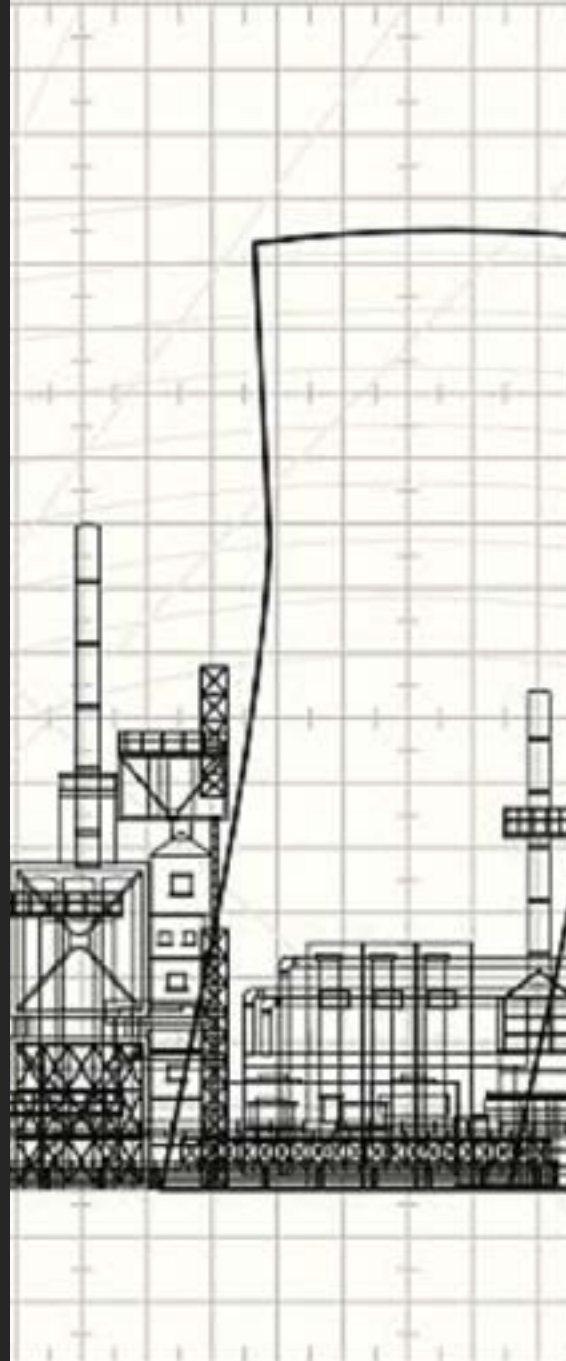


Our nuclear solutions

Mechanical engineering

Our teams work on design projects for the nuclear industry every day, whether civil, defence or research, and for all types of facility, including fuel cycle, power reactor (production and research centre), laboratory, and 4th generation (GEN IV) fusion reactor projects.

Working in our design offices or on projects at our customers' premises, our teams are able to provide high added value throughout the design cycle for nuclear islands, classified safety components, including for the hard core, or any other systems contributing to a high level of nuclear safety. These design activities can be accompanied by any type of analysis, including nuclear safety.



Defence
nuclear
facility

Research & Development

Sketches & Basic design

Preliminary design (APS)

Detailed preliminary design
(APD)

Implementation studies & Methods

Integration studies / Approvals

Commissioning studies

Maintenance & Revamping



Civil
nuclear
facility

Design & Definition

- Feasibility study
- Architecture and design of systems and sub-systems
- CAD design
- Functional dimensioning and tolerancing
- Digital mock-up and tree structure management
- Analysis and management of interference in complex environments

Calculations & Modelling

- Structural calculations: Clean up/simplification of geometry, meshing
- Creation of finite element models
- Linear static analysis of mechanical resistance
- Dynamic calculation
- Mechanical behaviour modelling
- Qualification calculation report
- Thermomechanical calculations (thermal expansion, thermal preload)
- Fluid-structure interaction

Qualification & Certification

- Support for monitoring qualification documents
- Drafting of qualification documents
- Drafting of the Continuing Qualification Sheet
- Equipment qualification with suppliers
- Qualification Summary Note
- Qualification of suppliers and subcontractors
- Certification support

Tests

- Qualification and configuration of test methods
- Test monitoring
- Test data analysis report
- System testing and commissioning
- Core block test loop design (SMR/AMR)



Nuclear Codes and Standards

Software and Calculations:

- CATIA V5 / ENOVIA, Solidworks, Autocad 2D/3D, Nastran, Créo, E3D/PDMS
- RCC-M, RCC-MRx, ESPN, AFCEN standard, RSE-M, EUROCODES, FEM
- ASTER, CASTEM, ANSYS Workbench and APDL, ABAQUS, PERMAS, LS-DYNA, STARCCM+, MATLAB, RSTAB

General installation engineering

Process

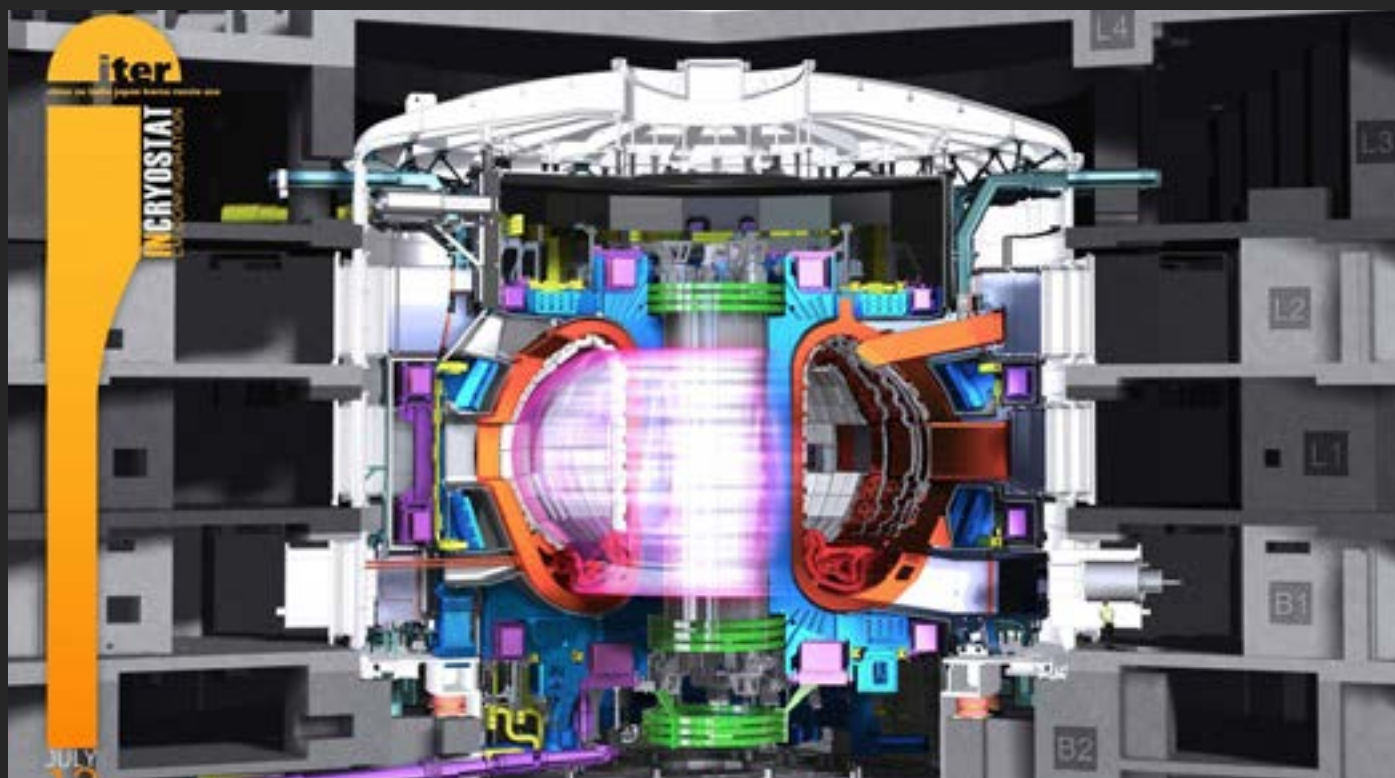
We are positioned as a major player in the technical solutions offered to industrialists. Researching and developing innovative approaches tailored to your needs is a strategic focus of our development. To provide the best possible response, we pool the skills of our experts in boiler making, piping, instrumentation, mechanics, robotics, mechatronics, automation and industrial transfer.

Our engineers carry out structural calculations for our concrete and steel structures in compliance with current standards.

HVAC & Utilities

Our engineers carry out all sizing operations for production, storage and utility distribution facilities.

This solution includes the production of deliverables such as PFDs, UID/PIDs, pipe classes, sizing studies and calculation notes.



Instrumentation | Control-command | Electricity

Fortil is able to support you with a wide range of services applicable to all industries, whether tertiary or process.

General electricity

- Delivery substation / Sub-distribution panel
- Transformer station
- LV master distribution board / High voltage/Low voltage distribution
- Fire detection
- Access / intrusion control

Industrial electricity & automation

- Gas detection
- Equipment cabinet
- Automation integration
- Field bus
- TBM / CTM supervision
- Environmental monitoring
- SCADA / HMI

Instrumentation & control-command

- Control of radiation protection and quality rules
- Replacement of pressure, level and temperature sensors
- Calibration (static and dynamic)
- Adjustment of regulating systems
- Performance of Main Primary System Hydraulic Tests for nuclear power plants during ten-yearly inspections
- Core control-command activities

Nuclear Codes and Standards

Software and Calculations:

- AVEVA E3D-PDMS / Microstation, Tekla structure, Autocad 2D/3D
- ASME, CODAP, EN 13445, CODETI, EN 13480
- PIPESTRESS, CAESAR II, ROBOT, Flowmaster, Ansys Fluent



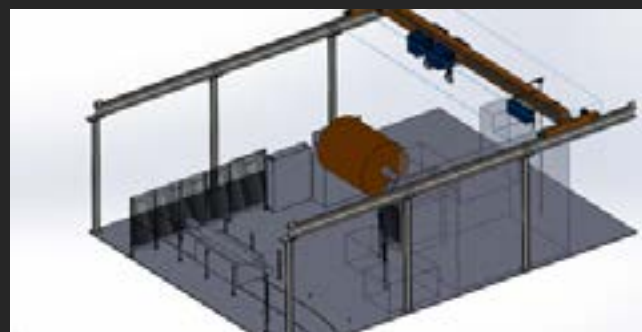
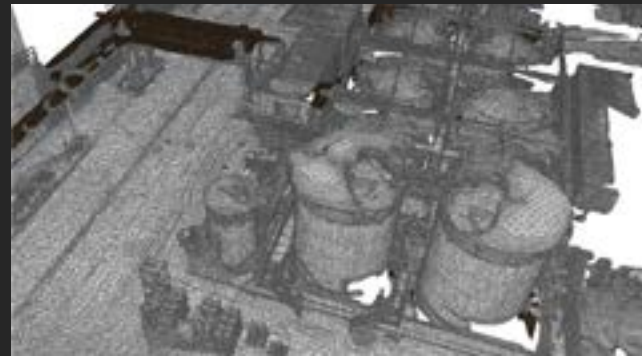
Construction and project management of nuclear facilities

Our teams will design and supervise your new build or refurbishment projects, whether for the nuclear island or on the conventional island of the ICPE, BNI or SBNI.

Fortil's design offices bring together a full range of expertise for All Buildings Trades and Professions lots:

- Project management support
- Roads and other networks
- Civil engineering and BIM (Autodesk REVIT)
- Secondary works
- Geotechnical engineering
- Operations monitoring and site reporting
- QHSE-RP
- Operational nuclear safety (work site and/or controlled area)

Our works supervision teams are equipped with 3D scanners to carry out all types of TQC (As-built) surveys and reproduce the digital twin as a 3D model.



Nuclear Safety

In order to offer a comprehensive nuclear service, Fortil has nuclear safety expertise that enables it to operate in all aspects of the nuclear industry, whether scientific, technical or organisational.

We provide nuclear safety services for all the major contractors and players in the industry, using a pragmatic and resolutely efficient approach.

We can work on all types of nuclear facilities.

Fortil is able to work on nuclear safety projects for all types of basic nuclear installation (BNI) and secret basic nuclear installation (SBNI): power reactors (nuclear power plants, research reactors, fusion reactors), fuel cycle facilities (enrichment, production, processing, warehousing, storage), defence and experimental facilities for the main nuclear operators.



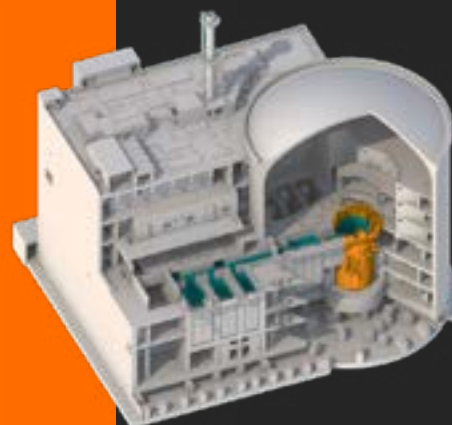
Compliance with requirements & quality/safety control



Integrated nuclear safety



Organisational and human factors



Nuclear projects

Nuclear projects call for increasingly demanding regulatory requirements, but also require an understanding of the complex management systems of the various nuclear operators.

Fortil works with these customers to support them in their technical skills, while integrating nuclear safety and radiation protection requirements. This support is provided for projects that have the most effective industrial plans, with risk-based management combined with a graduated approach to safety requirements.

Nuclear Safety Project Services

- Operational nuclear safety
- Safety study & Document drafting
- Nuclear safety crisis management

Services based on ISO 19443

Implementation of nuclear safety requirements and nuclear safety culture.

Prevention, control and handling of CFS Articles & Documents

- Means of prevention
- Means of combating CFS
- CFS-type discrepancy handling system

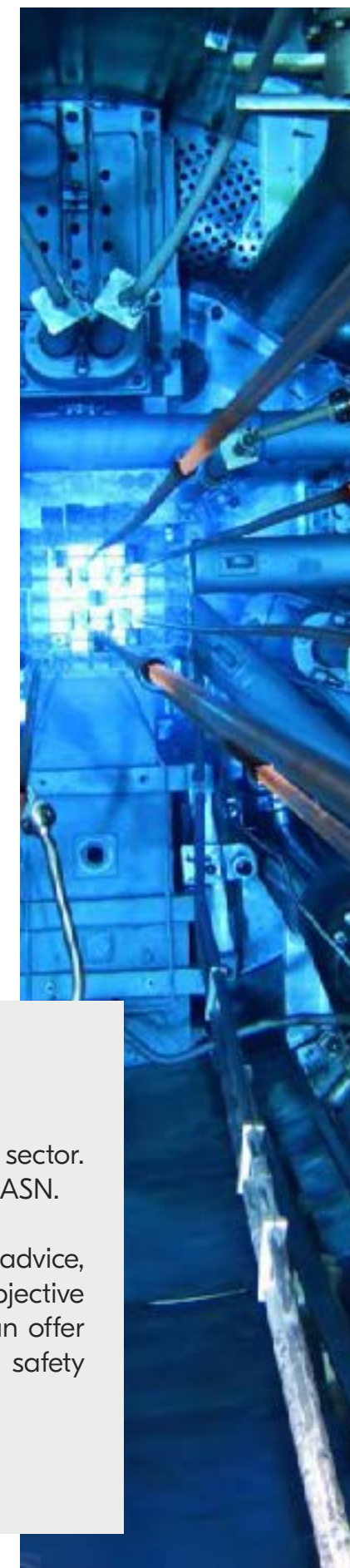
Start-ups and SMR

- Application of safety requirements to GEN IV reactors
- Safety Option File
- Dialogue with the ASN

Nuclear safety expertise

The objective demonstration of expertise is essential in the nuclear sector. Fortil's nuclear safety expertise is widely recognised, including by the ASN.

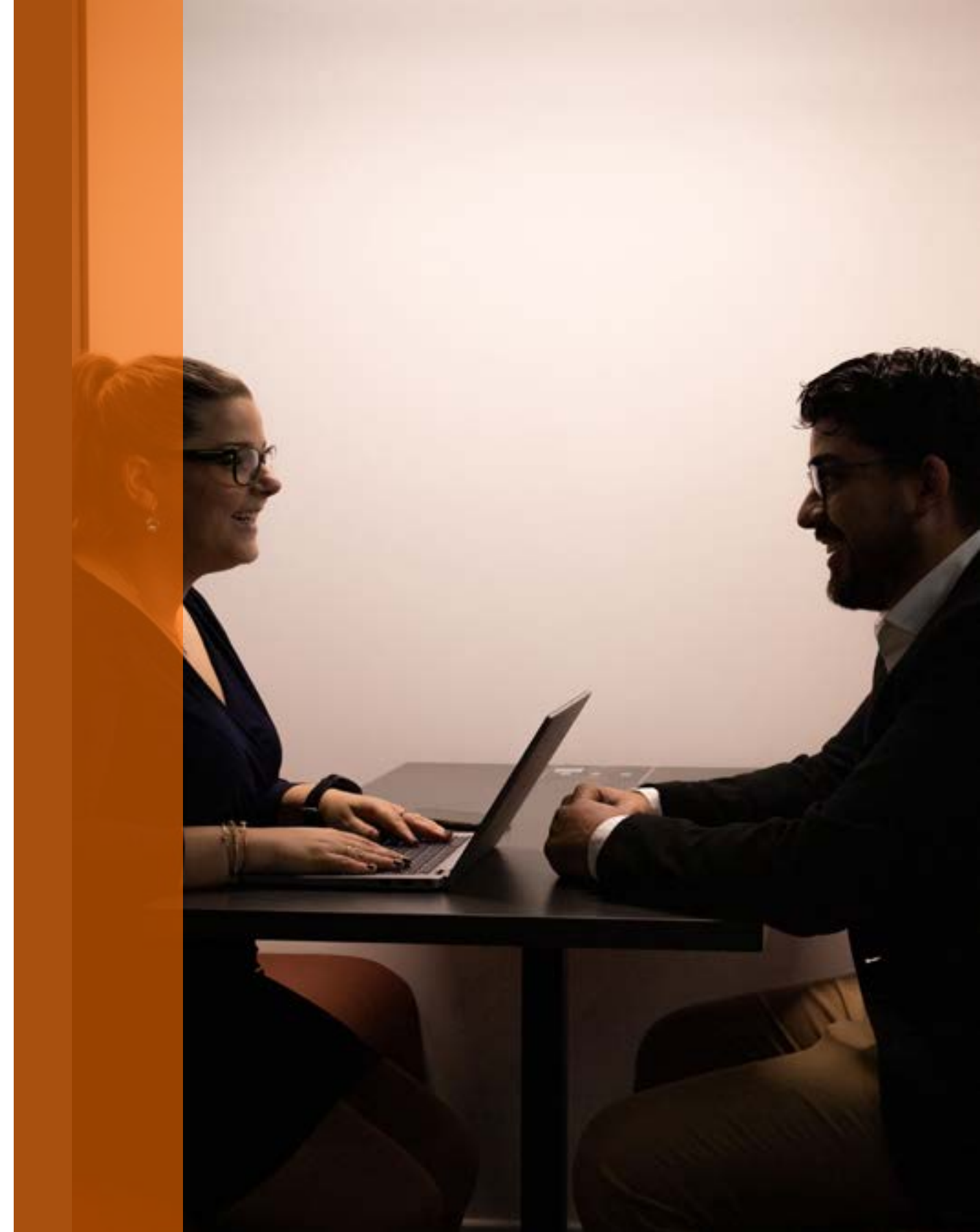
This position enables us to provide our customers with high-level advice, support and guidance to meet a wide range of needs requiring objective and demonstrable validation of project elements. This means we can offer support, audit, expertise and inspection services that take nuclear safety requirements into account.



Some of our partners

At Fortil, we are proud of our solid reputation and our relationship of trust with our customers.

We work closely with our partners to understand their unique goals, develop strategies tailored to their specific needs and help them see their projects come to fruition.



Quality policy, certifications and accreditations

We are meticulously and decisively building our approach to overall performance through our quality approach, which has been in place since the Group's inception over ten years ago.

Above all, it is our corporate promise, an obsession that dictates the day-to-day work of all our employees and is reflected in every project we undertake, no matter how complex.

Fortil strives for operational excellence so that the impact of our teams' work benefits our customers and all of our partners and the regions in which we operate.

Our model is based on a responsible approach to social issues, with quality as an essential prerequisite for a sustainable approach.

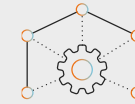
To consolidate our continuous improvement approach to Quality, Health, Safety & Environment performance, we have **ISO 9001 & ISO 14001, MASE and CEFRI** certification. These standards are a major lever for the company's development and everyone's well-being, providing methodological benchmarks that guarantee an effective and sustainable approach. We measure this positive impact in our systems every year.



We are working on the roll-out of **ISO 19443 certification | 2018**. Our engineers and experts are trained in the following accreditations and certifications:

- Risks and Safety: PRI, PR2, SCN1, SCN2, CC, CSQ, PFI, CSA, STARS 5.1, 5.2 and 7, SST, Asbestos Manager, PP58, Atex
- Electrical accreditations, HO BOV, B1-B2-BR-BC-BS
- Mechanical accreditations: M0-M1-ME-M2-M2 MR - MC test
- Welding and Inspection: IWT | IWE | Cofrend (PT, UT, VT, RT, MT)
- Quality and RP: CRP Level 3 - HN1 - HN2 - HN3

Our delivery models



Service hub

If you have specific recurring requirements, we can industrialise them, giving you total control over costs and scheduling.

- Flexibility & versatility
- Overload / Underload management
- Productivity optimisation
- Breakdown of activities



Work package

Our design office is aiming for ISO 19443 certification in 2025, so we can manage your requirements on an outsourced basis. The design, implementation and monitoring are guaranteed by our business teams and managed by dedicated project managers for:

- Time/Cost/Quality control
- Commitment to results
- Agility and responsiveness



Technical support

We offer you our expertise in providing intellectual and material services at various stages of the project.

- Choice of expertise
- A single contract for each service
- Resource flexibility



Technical expertise hub

A multidisciplinary team of employees will be dedicated to you within the framework of a defined level of service and key performance indicators.

- Service continuity
- Skills and resources management
- Fully managed by Fortil
- Simplified administration and project monitoring



Our HR Vision



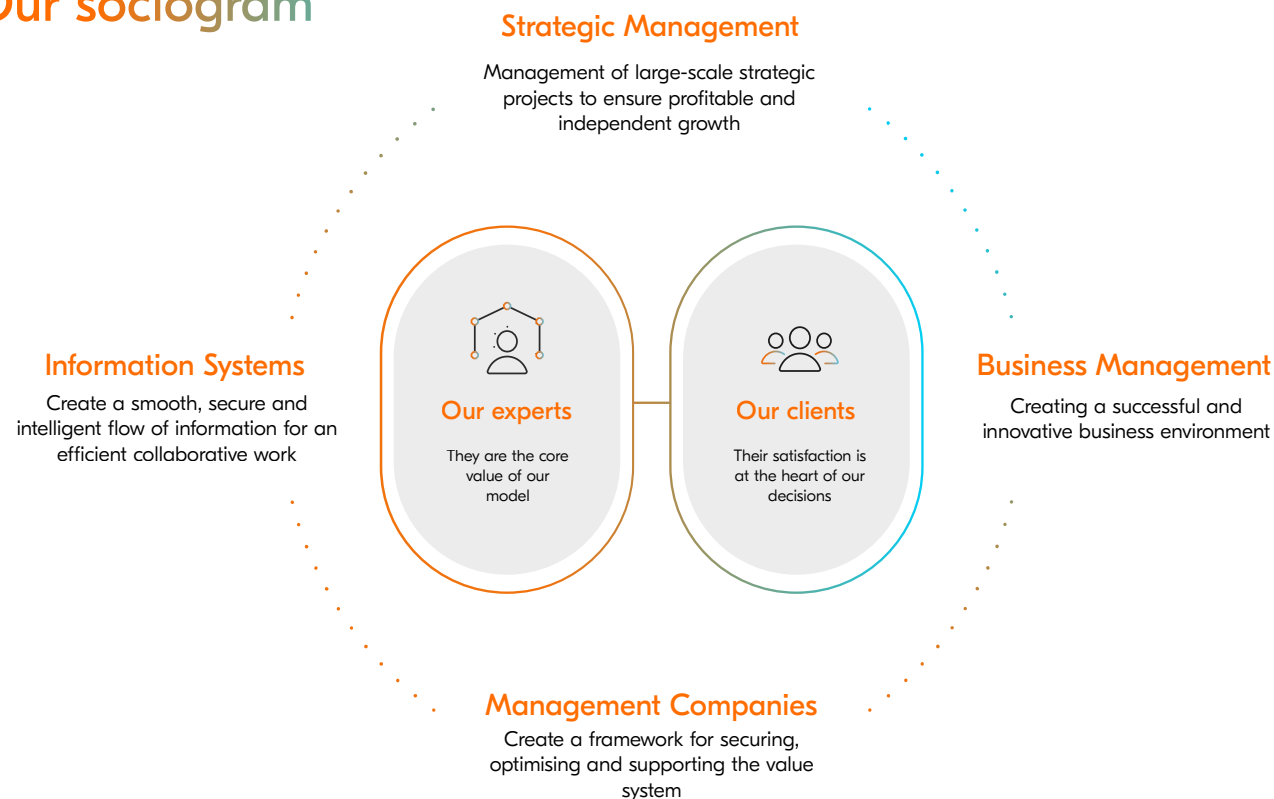
An organisation modelling role emulation and shared responsibility



We think of our organisation as a system in which everyone can fulfil their potential without being held back by the ambitions of others. To model this, we value relationships rather than hierarchical roles.

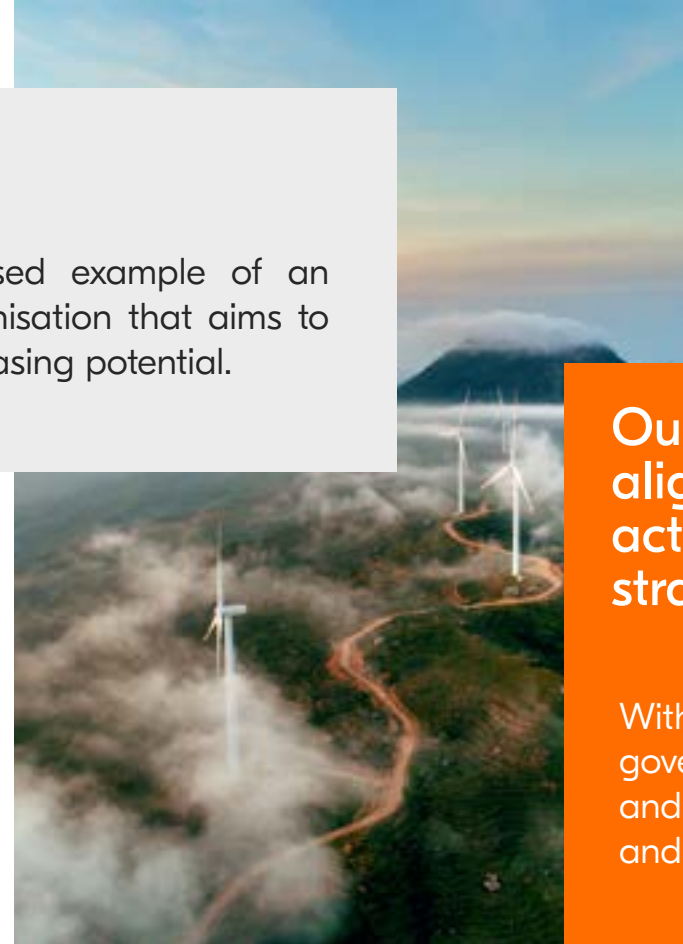
Communication is an essential part of our performance, highlighting the advantages of an interpersonal pact based on responsiveness, clarity and trust. Each job role is a pillar in the system, with technical expertise at its centre, which we mobilise to satisfy our customers.

Our sociogram



Our vision

To be a recognised example of an international organisation that aims to regenerate by releasing potential.



Our mission is to align our operational activities with our strategy.

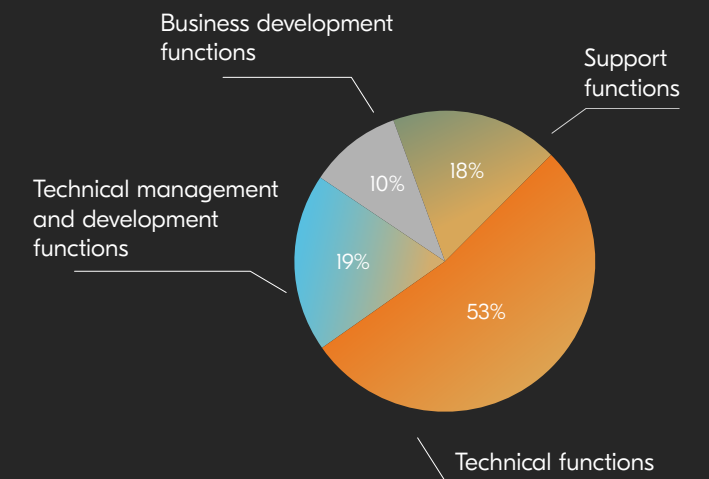
Within a framework of inclusive governance, stimulating expertise and undertaking technical, human and environmental projects.

Entrepreneurial engineers

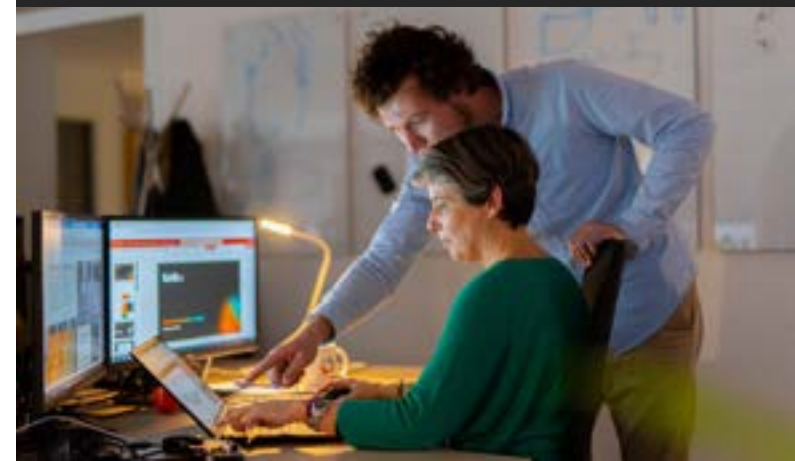
What gives the model its strength is how we attribute to our employees the ability to initiate development strategies and to engage with them on the results. Nothing in our HR policy has been more effective than giving responsibility to shareholding employees. All of our shareholders are current employees of the group with the aim of achieving a shared governance system. Our ambitious recruitment plans combine quality and quantity.

Demand is high since the possibilities are endless. Joining us gives meaning to your work, because we have the resources of a financially healthy business and the agility of a start-up.

Breakdown of the Group's shareholders



Our ambitious recruitment plans combine quality and quantity. Demand is high since the possibilities are endless. Joining us gives meaning to your work, because we have the resources of a financially healthy business and the agility of a start-up.



A socially responsible group

For a company to enjoy sustainable prosperity, it must ensure there is greater sharing of results and a more level playing field. Fortil is fully committed to these goals.

Our aim is to positively impact Fortil's internal and external ecosystems via an ethical and transparent organisation, increasing the proportion of shareholding employees to 30%, offering an endowment fund geared towards equal opportunities and securing our employees' personal interests.

Our ecosystem is firmly focused on our CSR challenges. Ever since we started out, we have opted for a sustainable development and ethical business approach.



In order to achieve this, and following a third-party audit, we were awarded the GOLD medal by Ecovadis in 2024, placing us in the top 5% of the world's best-rated companies.

In addition to the guidelines we set ourselves on a daily basis, we have sought to reinforce our commitments by taking part in a number of external bodies that promote equal opportunities, inclusion and the environment.



Fortil Endowment Fund

We want to have a positive impact on our internal and external ecosystems. Our mission is equal opportunities. The Fortil Group takes its responsibilities seriously and, in 2020, it created its own Endowment Fund.

This structure allows us to fund community projects that promote education and inclusion. IN place of honour are 10 associations working to give young people and those furthest from employment an outlook for the future.

Although 90% financed by Fortil, in 2021 the Endowment Fund invited any customers and suppliers wishing to take part in the initiative to do so, with the aim of multiplying the impact of these community projects by supporting even more beneficiaries.



Your contacts:

Olivier REMINI

CEO & Founder

olivier.remini@fortil.group

Bosko JOVANOVIC

Nuclear Development Manager

bosko.jovanovic@fortil.group

More about our
model

fortil.group

Find out about our
social actions

fondsdedotationfortil.com

Find us on
LinkedIn

linkedin.com/company/fortil